



ROBUSTA
STEP FORWARD



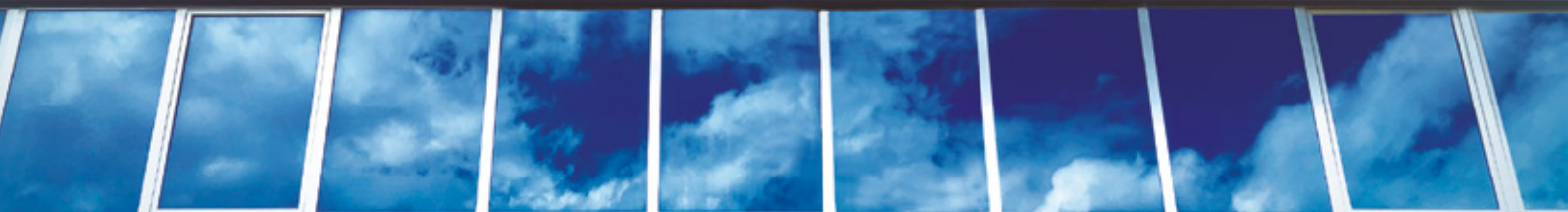
HEALTH AND PHARMACEUTICAL INDUSTRY

JUNE 2022



ROBUSTA

STEP FORWARD



At ROBUSTA, we manufacture **safety and professional solutions** since 1999. We develop extraordinarily long-lasting and comfortable footwear and accessories tailored to the needs of our customers, in accordance with a commitment to permanent service and a strict quality plan. The result is a very extensive catalogue with **more than 750 SKUs** that meet the needs of professionals in multiple industries.

A work process combining an in-depth **study of the industry and comprehensive biomechanical experiments** have led us to create a collection specifically designed for professionals in the Pharmaceutical Industry and various fields in the Health Sector, including Healthcare, Pharmacies, Orthopaedics and Nursing Homes.

The result is a collection of professional footwear featuring highly breathable, lightweight, durable models with antistatic, non-slip soles and a design that helps combat fatigue by offering maximum comfort and rest.

LEAVE A FOOTPRINT, BUT NOT ENVIRONMENTAL

At Calzados Robusta we know that the quality of our life at work significantly depends on our environment. That is why we are committed to preserving and caring for the environment by progressively reducing the environmental footprint of our processes. This commitment to sustainability incorporates **eco design** as a strategic competitiveness factor to optimize processes and reduce environmental impact throughout the product life cycle (UNE 14040 - UNE 150301). It is a global process that not only involves the use of green materials, but also the most sustainable ways of producing, storing and shipping our goods to clients.



We control and reduce VOC emissions and discharges, offset part of our carbon footprint with the "Calculate, Reduce and Compensate" programme of the Spanish Ministry for Ecological Transition and contribute to the Sustainable Development Goals.



WHERE SAFETY BEGINS

Professional footwear for the industrial sector is a fundamental component of protective equipment. Not only do employees' safety depend on it, but also their performance and daily well-being.

At ROBUSTA we are highly aware of the importance of developing the best products for each sector; products that respond to specific needs as well as innovative products that anticipate possible contingencies in the workplace, even before they occur.

Our teams partner with **INESCOP**, to test each new **RDI** development, and the performance of all our designs in our laboratory in Arnedo, La Rioja.

The result is a collection of comfortable, lightweight, safety, protective and uniform footwear designed to suit various industries: **Health, Food, Special Risks, Catering, Security Forces, Forest Industry and Firefighting.**



DESIGNATORS

Safety footwear for professional use without toecap protection, as per ISO 20347 standard

01=OB+A+E

Closed seat region

OB= Basic requirements.

A= Antistatic footwear. It dissipates static electricity produced by movement and activity to the ground.

E= Energy absorption of seat region. Soft heel support surface. Prevents fatigue and joint injuries.

FO= Hydrocarbon resistant sole.

Optional requirement met by all our models.

02=01+WRU

WRU= Resistance of the upper against water penetration and absorption. Liquid repellent.

03=02+P= 01 + WRU + P + CLEATED OUTSOLE + CLEAT SOLE DESIGN

P= Sole penetration resistance.

SRA= Slip resistance on ceramic tile surface with a soapy sodium lauryl sulphate solution (flat and heel).

SRB= Slip resistance on steel surface with glycerine (flat and heel).

SRC= Slip resistance on both surfaces.

Safety footwear for professional use with toecap protection, as per ISO 20345 standard

S1=SB+A+E

Closed seat region

SB= Basic requirements

A= Antistatic footwear. It dissipates static electricity produced by movement and activity to the ground.

E= Energy absorption of seat region. Soft heel support surface. Prevents fatigue and joint injuries.

FO= Hydrocarbon resistant sole.

Optional requirement met by all our models.

S2= S1 + WRU

WRU= Resistance of the upper against water penetration and absorption. Liquid repellent.

S3= S2+P = S1+WRU+P+ CLEATED OUTSOLE + CLEAT SOLE DESIGN

P= Sole penetration resistance.

SRA= Slip resistance on ceramic tile surface with a soapy sodium lauryl sulphate solution (flat and heel).

SRB= Slip resistance on steel surface with glycerine (flat and heel).

SRC= Slip resistance on both surfaces.

INTERIOR HEIGHT OF MODELS



The interior height indicated on each model is the height of the heel, without insole, at its highest point.

EUROPEAN STANDARDS

EN ISO 20344

It sets out the requirements and test methods for safety, protective and occupational footwear for professional use.

EN ISO 20345

It sets out the specifications for safety footwear for professional use, with toecaps designed to resist an impact at an energy level of 200 joules and a compression of 15 kN.

EN ISO 20346

It sets out the specifications for protective footwear for professional use, with toecaps designed to resist an impact at an energy level of 100 joules and a compression of 10 kN.

EN ISO 20347

It sets out the specifications for occupational footwear for professional use.



Models

Coolmax® ankle socks	28	Cloud White 4M	26	María white perforated	20
Carlota white perforated	19	Cloud White Blue 4M	26	María white non-perforated	20
Carlota lab white	21	Cloud White Pink 4M	26	María lab white	22
Carlota black non-perforated	19	Cloud Black 4M	27	María lab black	22
Carmen white perforated	19	Cloud Black Blue 4M	27	Nerea blue	17
Carmen white non-perforated	19	Cloud Navy 3M	27	Nerea pink	17
Carmen lab white	21	Coral	15	Ayr Integral High insole	29
Carmen lab black	21	Delmare blue	16	Ayr Integral Low insole	28
Carmen lab green	22	Delmare grey	16	Ayr Preventia® insole	29
Carmen black non-perforated	20	Delmare pink	16	Genova X Max insole	28
Cloud White 3M	24	Flexy Black	13	Cloud Strap	30
Cloud White Blue 3M	24	Flexy White	13	Cloud Insole	30
Cloud White Pink 3M	24	Galia	15	Zale blue	15
Cloud Black 3M	25	Greta blue	14	Zale grey	16
Cloud Black Blue 3M	25	Greta grey	14	Zale pink	15
Cloud Navy 3M	25	Greta pink	14		





SAVE THE SEA



Greta grey

92406 01+FO+CI+SRC	34-48 EU • 1-13 UK Inner height: 77 mm (± 5%)
Sole	PU + TPU
Upper	Microfibre. Breathable and water repellent



Greta blue

92407 01+FO+CI+SRC	34-48 EU • 1-13 UK Inner height: 77 mm (± 5%)
Sole	PU + TPU
Upper	Microfibre. Breathable and water repellent



Greta pink

92408 01+FO+CI+SRC	34-48 EU • 1-13 UK Inner height: 77 mm (± 5%)
Sole	PU + TPU
Upper	Microfibre. Breathable and water repellent



MACHINE WASHABLE 12 WASHES



Carlota white perforated

	34-48 EU • 1-13 UK
90223 01+FO+CI+SRC	Inner height: 65 mm (± 5%)
Sole	PU + TPU
Upper	Cowhide washable



Carlota black non-perforated

	34-48 EU • 1-13 UK
90224 02+FO+CI+SRC	Inner height: 65 mm (± 5%)
90226 S2+CI+SRC	Inner height: 65 mm (± 5%)
Sole	PU + TPU
Upper	Cowhide washable



Carmen white perforated

	34-48 EU • 1-13 UK
90197 01+FO+CI+SRC	Inner height: 70 mm (± 5%)
Sole	PU + TPU
Upper	Cowhide washable



Carmen white non-perforated

	34-48 EU • 1-13 UK
90199 02+FO+CI+SRC	Inner height: 70 mm (± 5%)
Sole	PU + TPU
Upper	Cowhide washable



Carmen black non-perforated

90200 O2+FO+CI+SRC		34-48 EU • 1-13 UK
		Inner height: 70 mm (± 5%)
Sole	PU + TPU	
Upper	Cowhide washable	



María white perforated

90206 O1+FO+CI+SRC		34-47 EU • 1-13 UK
		Inner height: 70 mm (± 5%)
Sole	PU + TPU	
Upper	Cowhide washable	



María white non-perforated

90208 O2+FO+CI+SRC		34-47 EU • 1-13 UK
		Inner height: 70 mm (± 5%)
Sole	PU + TPU	
Upper	Cowhide washable	

LABORATORY



Carlota lab white

90184 S2+CI+SRC		34-48 EU • 1-13 UK
		Inner height: 65 mm (± 5%)
Sole	PU + PU	
Upper	Cowhide	
Toe cap	Aluminium 200 J	



Carmen lab black

90179 S2+CI+SRC		34-48 EU • 1-13 UK
		Altura interior: 70 mm (± 5%)
Sole	PU + PU	
Upper	Cowhide	
Toe cap	Aluminium 200 J	



Carmen lab white

90178 S2+CI+SRC		34-48 EU • 1-13 UK
		Altura interior: 70 mm (± 5%)
Sole	PU + PU	
Upper	Cowhide	
Toe cap	Aluminium 200 J	



Carmen lab green

90177 S2+CI+SRC		34-48 EU • 1-13 UK
		Inner height: 70 mm (± 5%).
Sole		PU + PU
Upper		Cowhide
Toe cap		Aluminium 200 J



María lab white

90181 S2+CI+SRC		34-48 EU • 1-13 UK
		Inner height: 70 mm (± 5%).
Sole		PU + PU
Upper		Cowhide
Toe cap		Aluminium 200 J





CLOUD 3M



Cloud White 3M

92561 OB+SRC+E	35-46 EU 2-11 UK
Upper/Sole	Last generation mono-coque EVA clog
Strap	Non-stick SBS folding
Insole	Low density PU coated with microfibre



Cloud White Blue 3M

92563 OB+SRC+E	35-46 EU 2-11 UK
Upper/Sole	Last generation mono-coque EVA clog
Strap	Non-stick SBS folding
Insole	Low density PU coated with microfibre



Cloud White Pink 3M

92562 OB+SRC+E	35-46 EU 2-11 UK
Upper/Sole	Last generation mono-coque EVA clog
Strap	Non-stick SBS folding
Insole	Low density PU coated with microfibre



Cloud Black 3M

92564 OB+SRC+E	35-46 EU 2-11 UK
Upper/Sole	Last generation mono-coque EVA clog
Strap	Non-stick SBS folding
Insole	Low density PU coated with microfibre



Cloud Black Blue 3M

92565 OB+SRC+E	35-46 EU 2-11 UK
Upper/Sole	Last generation mono-coque EVA clog
Strap	Non-stick SBS folding
Insole	Low density PU coated with microfibre



Cloud Navy 3M

92560 OB+SRC+E	35-46 EU 2-11 UK
Upper/Sole	Last generation mono-coque EVA clog
Strap	Non-stick SBS folding
Insole	Low density PU coated with microfibre



Sole 3M

CLOUD 4M



Cloud White 4M

92567	OB+SRC+E	35-46 EU 2-11 UK
Upper	Last generation monocoque EVA clog	
Sole	EVA with special non-slip nitrile inserts	
Strap	Non-stick SBS folding	
Insole	Low density PU coated with microfibre	



Cloud White Blue 4M

92569	OB+SRC+E	35-46 EU 2-11 UK
Upper	Last generation monocoque EVA clog	
Sole	EVA with special non-slip nitrile inserts	
Strap	Non-stick SBS folding	
Insole	Low density PU coated with microfibre	



Cloud White Pink 4M

92568	OB+SRC+E	35-46 EU 2-11 UK
Upper	Last generation monocoque EVA clog	
Sole	EVA with special non-slip nitrile inserts	
Strap	Non-stick SBS folding	
Insole	Low density PU coated with microfibre	



Cloud Black 4M

92570	OB+SRC+E	35-46 EU 2-11 UK
Upper	Last generation monocoque EVA clog	
Sole	EVA with special non-slip nitrile inserts	
Strap	Non-stick SBS folding	
Insole	Low density PU coated with microfibre	



Cloud Black Blue 4M

92571	OB+SRC+E	35-46 EU 2-11 UK
Upper	Last generation monocoque EVA clog	
Sole	EVA with special non-slip nitrile inserts	
Strap	Non-stick SBS folding	
Insole	Low density PU coated with microfibre	



Cloud Navy 4M

92566	OB+SRC+E	35-46 EU 2-11 UK
Upper	Last generation monocoque EVA clog	
Sole	EVA with special non-slip nitrile inserts	
Strap	Non-stick SBS folding	
Insole	Low density PU coated with microfibre	



Sole 4M

ACCESSORIES



Coolmax® ankle socks

80011 White	S: 1-15
80012 Black	M: 6-8
	L: 9-12



Ayr Integral Low insole Individual pack

80842 Blue	34-48 EU • 1-13 UK
------------	--------------------



Genova X Max insole Individual pack

80843 Black	34-48 EU • 1-13 UK
-------------	--------------------



Ayr Preventia® insole Individual pack

80046 High

34-48 EU • 1-13 UK



Ayr Integral High insole Individual pack

80841 Black

35-50 EU • 2-15 UK



Cloud Strap

80834 Cloud White Strap	2-11 UK
80833 Cloud Pink Strap	2-11 UK
80832 Cloud Black Strap	2-11 UK
80831 Cloud Navy Strap	2-11 UK
80830 Cloud Blue Strap	2-11 UK



Cloud Insole

80829 Cloud White-Grey insole	2-11 UK
80828 Cloud Pink-Fuchsia insole	2-11 UK
80827 Cloud Black insole	2-11 UK
80826 Cloud Navy insole	2-11 UK
80825 Cloud Blue-Marine insole	2-11 UK





ROBUSTA
STEP FORWARD

Insole, Low density PU coated
with microfibre

Non-stick SBS folding strap

Last generation monocoque EVA clog

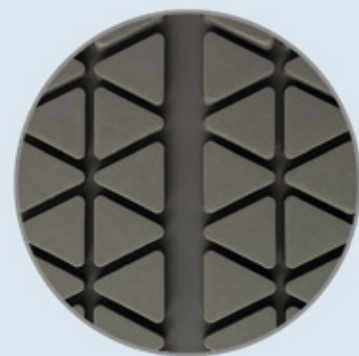


cloud 4M

OB+SRC+E
EN ISO 20347:2012
2-11 UK

PROPERTIES

- Anti slip
- Antibacterial
- Ultralight
- Latex Free
- Washable in domestic washing machine up to 30°
- Possibility of acquiring insoles and straps diferent colors



Special non-slip nitrile inserts



ROBUSTA

STEP FORWARD

www.robusta.es

Calzados Robusta S.L.
Ctra. de Préjano, 72
26580 Arnedo (La Rioja) España
T +34 941 38 54 11
robusta@robusta.es